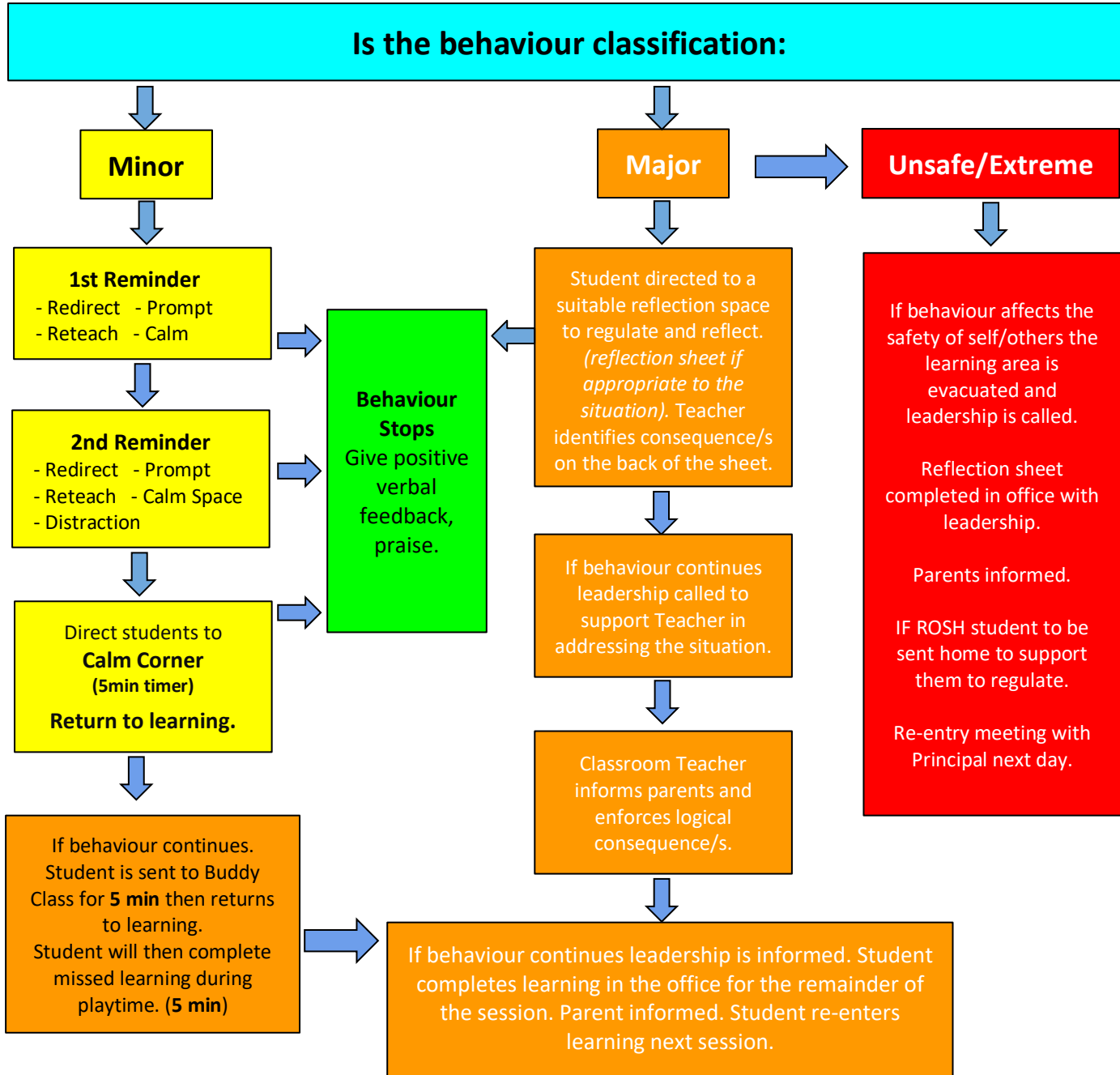




# Student Response to Behaviour Flow Chart



**When dealing with ALL student behaviour be:**  
 Brief  
 Calm  
 Consistent  
 Respectful  
 Immediate  
 Private

**Logical Consequence**  
 A logical consequence is an appropriate action relevant to the problem or behaviour presented.

**Redirect** - stop, think, redirect to the correct behaviour  
 Verbal - Instruction  
 Physical - Gentle Touch  
 Cue - Image

**Reteach** - taught again using a different strategy

**Prompt** - bridging the gap between current behaviour and desired behaviour

**Distraction** - Dealing with off task behaviour quickly using easy context based questions

**Emotional Coaching** - helping Ss understand emotions, name how they feel and help them to handle them appropriately

Teacher and students to complete behaviour forms and reflection sheets.  
 Classroom Teacher uploads sheet into Compass.



## Student Response to Behaviour Flow Chart



Minor inappropriate behaviour	Major inappropriate behaviour
<ul style="list-style-type: none"><li>• Shouting</li><li>• Using unsuitable language choices/hurtful language</li><li>• Rough play/grabbing/pushing (without intent to hurt)</li><li>• Inappropriate use of school equipment /unsafe use of playground equipment</li><li>• Classroom/ task refusal (inc failure to respond to teacher request)</li><li>• Interrupting others learning</li><li>• Consistently off task in classroom</li><li>• Moving around the room/learning space unnecessarily</li><li>• Lack of effort displayed in learning</li></ul>	<ul style="list-style-type: none"><li>• The intent of harm and malice (physical or emotional) to any child or adult (i.e., hitting, scratching, kicking, fighting, teasing, name calling, body shaming, racial comments, bullying)</li><li>• Continually disregarding staff instructions/talking back /blatant refusal of teacher request.</li><li>• Threatening other children or adults</li><li>• Leaving adult supervision</li><li>• Using abusive or inappropriate language</li><li>• Throwing objects</li><li>• Inappropriate use of technology</li></ul>